

Pill Lane, Feock, Truro, TR3 6SE

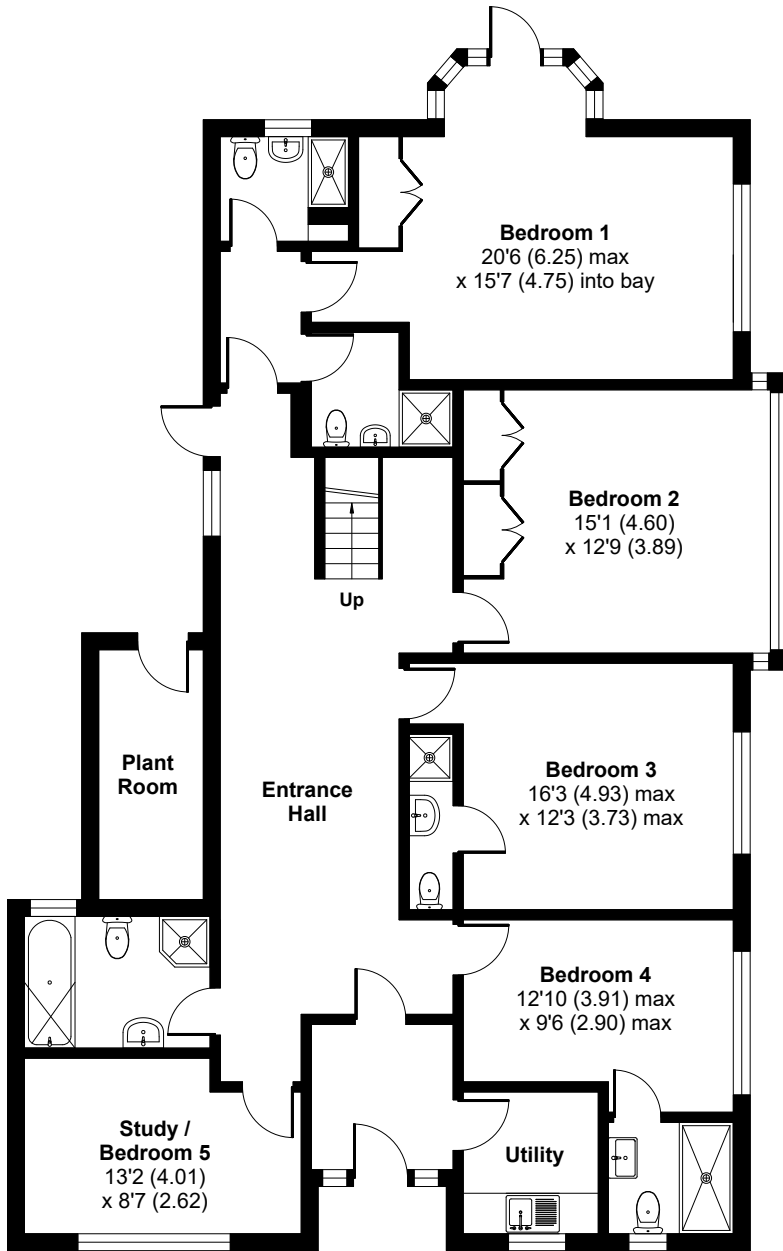
Approximate Area = 2741 sq ft / 254.6 sq m

Garage = 494 sq ft / 45.8 sq m

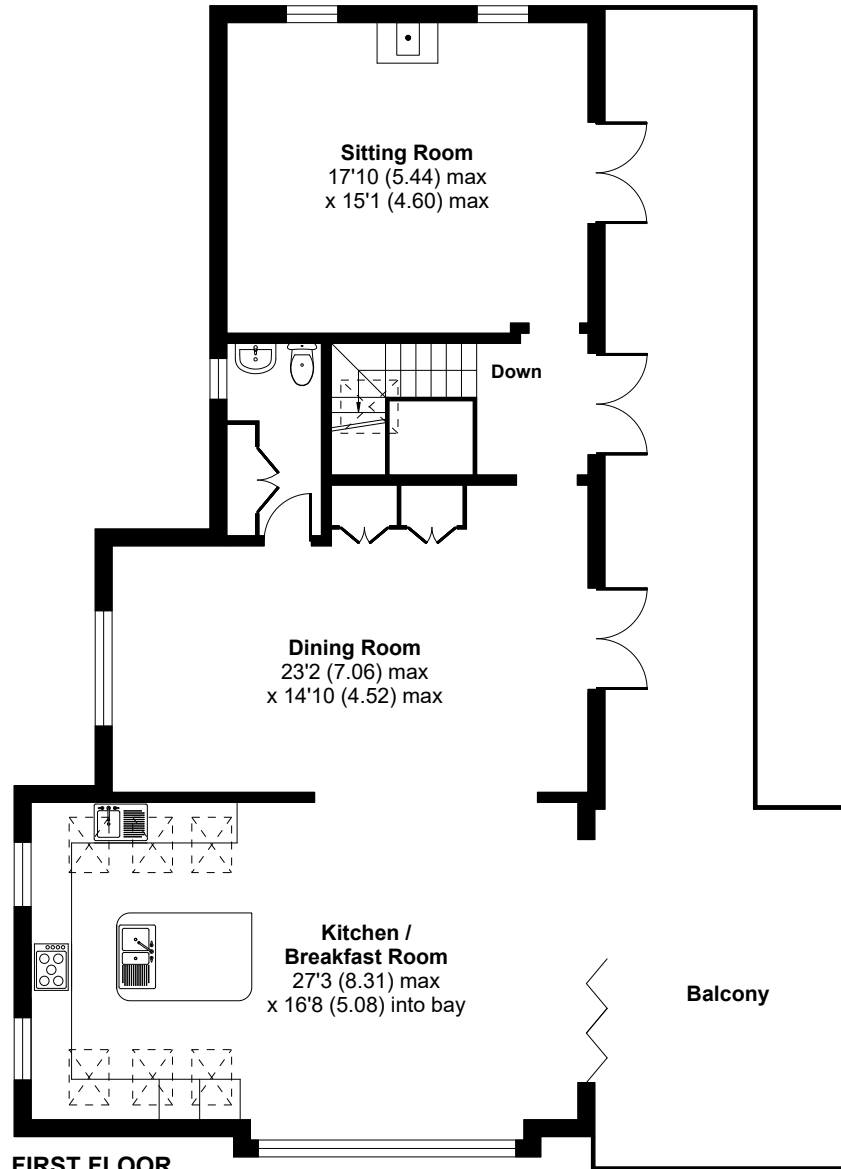
Boiler Room = 64 sq ft / 5.9 sq m

Total = 3299 sq ft / 306.3 sq m

For identification only - Not to scale



GROUND FLOOR



FIRST FLOOR

